

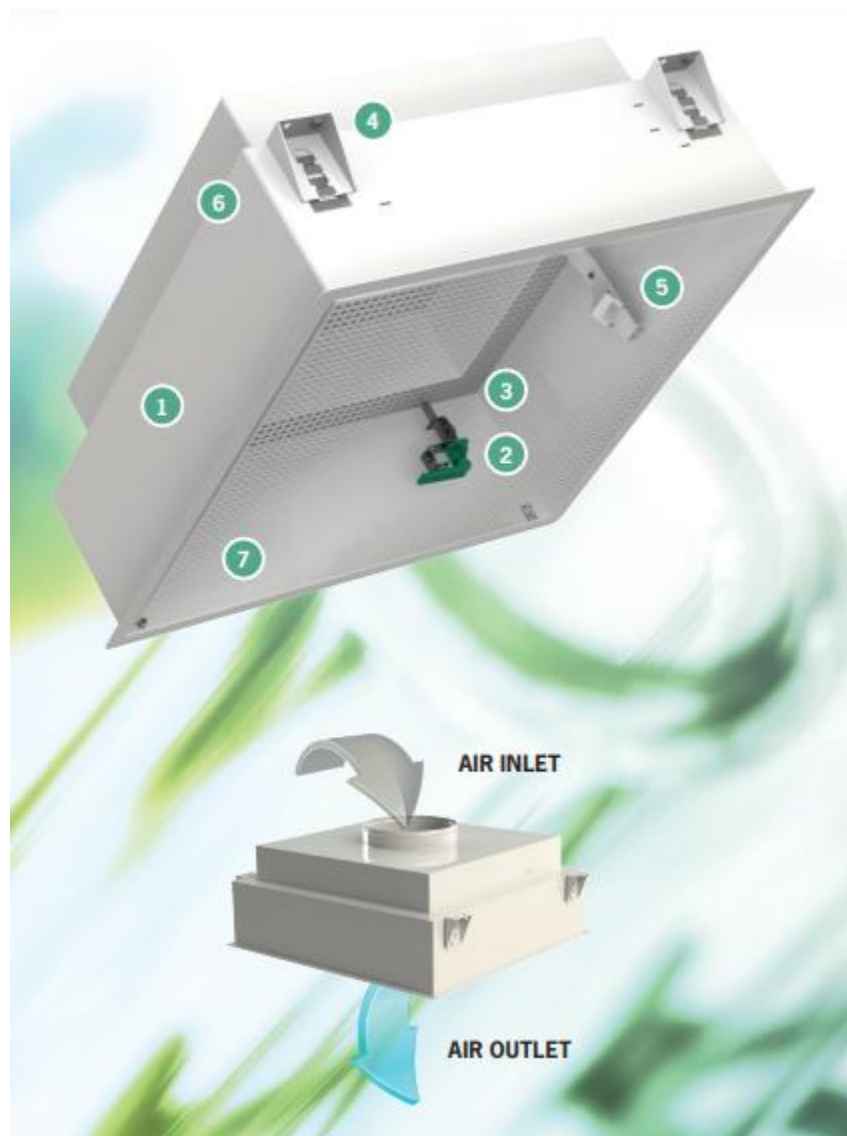


Terminal Filter Housing



CleanSeal is a new state of the art filter housing solution from Technocratic, especially developed for pharmaceuticals, Medical devices, Cosmetics, Herbal/Neutraceuticals & clean rooms and Life Science facilities. Easy to install. Easy to handle and maintain. Offers you easy access and maximum safety – long lasting and robust design, fully welded, no risk of leakage. Gives you economic and environmental benefits via very low pressure drops when equipped with Technocratics premium air filters. And if we may say it ourselves: the design of the new CleanSeal is really satisfying - it will blend in nicely into your ceiling.

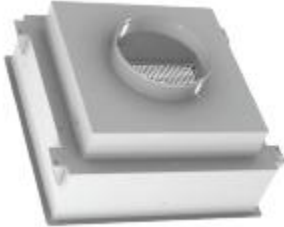
The new CleanSeal is part of Technocratic's complete filter housing range together with seal.





1 - STRONG, FULLY WELDED CONSTRUCTION

Housing is fully welded to ensure reliable tightness and bring clean air to the point



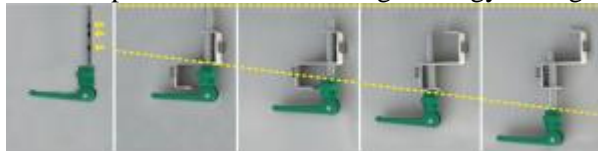
2 - TOOLLESS FILTER CLAMPING

Filter can be clamped without any tool; no risk to damage the filter, much easier for operator.



3 - BUILT-IN FILTER HEIGHT ADAPTER TO LOW PRESSURE DROP FILTER

CleanSeal can handle all Technocratic's Filters. Low pressure drop filters can be used either to help maintain pressure cascade or to get energy savings.



4 - UNIVERSAL MOUNTING SYSTEM (FALSE CEILING, SUSPENDING)

Can be adapted to false ceiling or suspended or used in T-Bar grid.



5 - FILTER RETAINER PRE-POSITIONING SYSTEM

Filter is pre-positioned by unique retainer; no need for a third hand or a second person.



6 - AVAILABLE FOR ALL GASKET TYPES

CleanSeal versions allow customer to chose any type of gaskets DIN, PU or Camfil Gel gaskets.





7 - INNOVATIVE QUICK GRID FASTENER

Immediate access to filter and control ports thanks to a unique fastener device and hinged diffusion plate. Open it only with a badge or a "credit" card.



AVAILABLE DIFFUSERS



PERFORATED (PF)



SWIRL (SW)



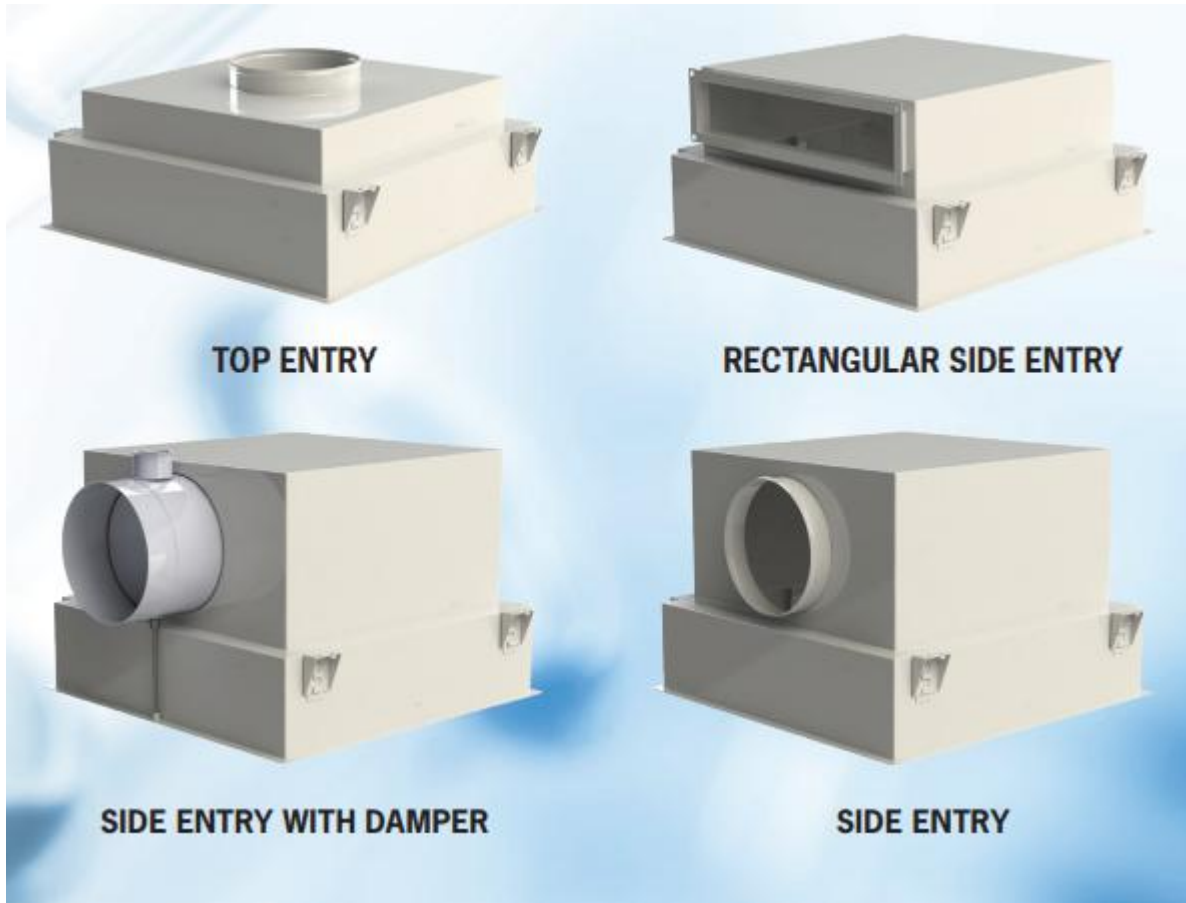
FOUR WAY (4W)



ADJUSTABLE VANES (AV)



AVAILABLE CONFIGURATIONS



STANDARDIZED DIMENSIONS

